

# Клапаны коренные для прибора серии **SG**

## Технические характеристики



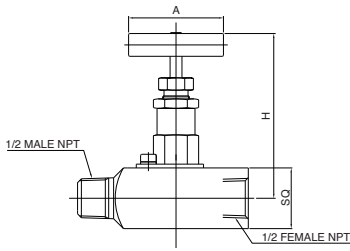
<b>Архангельск</b> (8182)63-90-72	<b>Калининград</b> (4012)72-03-81	<b>Новосибирск</b> (383)227-86-73	<b>Сочи</b> (862)225-72-31
<b>Астана</b> +7(7172)727-132	<b>Калуга</b> (4842)92-23-67	<b>Омск</b> (3812)21-46-40	<b>Ставрополь</b> (8652)20-65-13
<b>Астрахань</b> (8512)99-46-04	<b>Кемерово</b> (3842)65-04-62	<b>Орел</b> (4862)44-53-42	<b>Сургут</b> (3462)77-98-35
<b>Барнаул</b> (3852)73-04-60	<b>Киров</b> (8332)68-02-04	<b>Оренбург</b> (3532)37-68-04	<b>Тверь</b> (4822)63-31-35
<b>Белгород</b> (4722)40-23-64	<b>Краснодар</b> (861)203-40-90	<b>Пенза</b> (8412)22-31-16	<b>Томск</b> (3822)98-41-53
<b>Брянск</b> (4832)59-03-52	<b>Красноярск</b> (391)204-63-61	<b>Пермь</b> (342)205-81-47	<b>Тула</b> (4872)74-02-29
<b>Владивосток</b> (423)249-28-31	<b>Курск</b> (4712)77-13-04	<b>Ростов-на-Дону</b> (863)308-18-15	<b>Тюмень</b> (3452)66-21-18
<b>Волгоград</b> (844)278-03-48	<b>Липецк</b> (4742)52-20-81	<b>Рязань</b> (4912)46-61-64	<b>Ульяновск</b> (8422)24-23-59
<b>Вологда</b> (8172)26-41-59	<b>Магнитогорск</b> (3519)55-03-13	<b>Самара</b> (846)206-03-16	<b>Уфа</b> (347)22948 -12
<b>Воронеж</b> (473)204-51-73	<b>Москва</b> (495)268-04-70	<b>Санкт-Петербург</b> (812)309-46-40	<b>Хабаровск</b> (4212)92-98-04
<b>Екатеринбург</b> (343)384-55-89	<b>Мурманск</b> (8152)59-64-93	<b>Саратов</b> (845)249-38-78	<b>Челябинск</b> (351)202-03-61
<b>Иваново</b> (4932)77-34-06	<b>Набережные Челны</b> (8552)20-53-41	<b>Севастополь</b> (8692)22-31-93	<b>Череповец</b> (8202)49-02-64
<b>Ижевск</b> (3412)26-03-58	<b>Нижний Новгород</b> (831)429-08-12	<b>Симферополь</b> (3652)67-13-56	<b>Ярославль</b> (4852)69-52-93
<b>Казань</b> (843)206-01-48	<b>Новокузнецк</b> (3843)20-46-81	<b>Смоленск</b> (4812)29-41-54	

Единый адрес для всех регионов: [skb@nt-rt.ru](mailto:skb@nt-rt.ru) || [www.s-lok.nt-rt.ru](http://www.s-lok.nt-rt.ru)

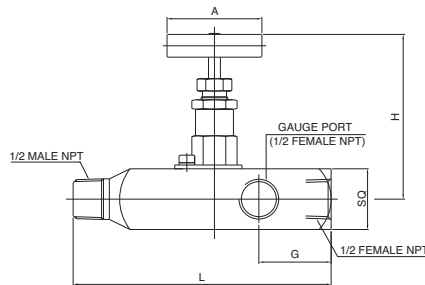
## Product Information

### Features

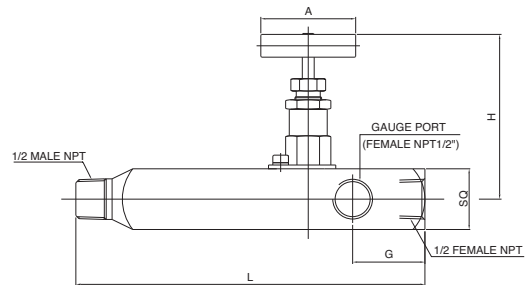
- The number of 1/2" female NPT Gauge Port
- SGRV has extended 4.0" body for pipe insulation



SGV Gauge Valve



SGRV Gauge Root Valve



SGRLV Extended Gauge Root Valve

### Table of Dimensions and Ordering Information

Valve Ordering Number	End Connection NPT	Orifice mm(in.)	Body Length mm(in.)L	MAX. OPEN mm (in.) H	SQ mm(in)	G mm(in.)	A mm(in.)
SGV-MF-8N	1/2 Male to 1/2 Female	6.4 (0.25)	90.0(3.54)	86.7 (3.41)	32 (1.26)	38.10 (1.50)	64.00 (2.52)
SGRV-MF-8N	1/2 Male to 1/2 Female		137.0(5.39)				
SGRV-MF-12N-8N	3/4 Male to 1/2 Female		137.0(5.39)				
SGRLV-MF-8N	1/2 Male to 1/2 Female		184.0(7.24)				
SGRLV-MF-12N-8N	3/4 Male to 1/2 Female		184.0(7.24)				

### Pressure-Temperature Ratings

Packing Material	Body Material	Temperature Range	Pressure Rating@100°F	Pressure Rating @Max. Temperature
Stainless Steel	PTFE	-54~232°C (-65~450°F)	413bar (6,000 psig)	4,130psig @ 450°F (285bar @232°C)
	Graphite	-54~648°C(1) (-65~1,200°F)		1,715psig @ 1,200°F (118bar @648°C)
Carbon Steel	PTFE	-29~176°C (-20~350°F)	413bar (6,000 psig)	5,230psig @ 350°F (360bar @176°C)
	Graphite	-29~176°C (-20~350°F)		

(1) Optional Grafoil packing for high temperature is available.

Graphite packing rating is limited to 537°C(1,000°F) with flange end connection. In air, Graphite rating is limited 523°C(975°F),

(2) in steam it can go up to the maximum temperature of 648°C (1,200°F).

-28 to 204°C (-18 to 399°F) with optional fluorocarbon FKM flange seal.

### Product Information

---

#### Testing

---

- Each instrument manifold is tested with nitrogen @ 1,000 psig (69 bar) to max. leak rate of 0.1 (SSCM).
- Hydrostatic shell test is performed at 1.5 times the working pressure as an option.
- Other tests are available upon request.

#### How to Order

---

- To complete the ordering number, select valve body material designator -S6 for S316, -CS for carbon steel, Example:SGRV-MF-8N-S6
- To order, use-GF as suffix to the ordering number, Example: SGRV-MF-8N-GF-S6
- To order sour gas service valve, add-SG to the ordering number. Example:SGRV-MF-8N-SG-S6

#### Safe Valve Selection

---

The selection of a valve for any application or system design must be considered to ensure safe performance. Valve function, valve rating, material compatibility, proper installation, operation and maintenance remain the sole responsibility of the system designer and the user. S-LOK accepts no liability for any improper selection, installation, operation or maintenance.



- |                                    |  |                                       |                                  |
|------------------------------------|--|---------------------------------------|----------------------------------|
| <b>Архангельск</b> (8182)63-90-72  | <b>Калининград</b> (4012)72-03-81      | <b>Новосибирск</b> (383)227-86-73     | <b>Сочи</b> (862)225-72-31       |
| <b>Астана</b> +7(7172)727-132      | <b>Калуга</b> (4842)92-23-67           | <b>Омск</b> (3812)21-46-40            | <b>Ставрополь</b> (8652)20-65-13 |
| <b>Астрахань</b> (8512)99-46-04    | <b>Кемерово</b> (3842)65-04-62         | <b>Орел</b> (4862)44-53-42            | <b>Сургут</b> (3462)77-98-35     |
| <b>Барнаул</b> (3852)73-04-60      | <b>Киров</b> (8332)68-02-04            | <b>Оренбург</b> (3532)37-68-04        | <b>Тверь</b> (4822)63-31-35      |
| <b>Белгород</b> (4722)40-23-64     | <b>Краснодар</b> (861)203-40-90        | <b>Пенза</b> (8412)22-31-16           | <b>Томск</b> (3822)98-41-53      |
| <b>Брянск</b> (4832)59-03-52       | <b>Красноярск</b> (391)204-63-61       | <b>Пермь</b> (342)205-81-47           | <b>Тула</b> (4872)74-02-29       |
| <b>Владивосток</b> (423)249-28-31  | <b>Курск</b> (4712)77-13-04            | <b>Ростов-на-Дону</b> (863)308-18-15  | <b>Тюмень</b> (3452)66-21-18     |
| <b>Волгоград</b> (844)278-03-48    | <b>Липецк</b> (4742)52-20-81           | <b>Рязань</b> (4912)46-61-64          | <b>Ульяновск</b> (8422)24-23-59  |
| <b>Вологда</b> (8172)26-41-59      | <b>Магнитогорск</b> (3519)55-03-13     | <b>Самара</b> (846)206-03-16          | <b>Уфа</b> (347)22948 -12        |
| <b>Воронеж</b> (473)204-51-73      | <b>Москва</b> (495)268-04-70           | <b>Санкт-Петербург</b> (812)309-46-40 | <b>Хабаровск</b> (4212)92-98-04  |
| <b>Екатеринбург</b> (343)384-55-89 | <b>Мурманск</b> (8152)59-64-93         | <b>Саратов</b> (845)249-38-78         | <b>Челябинск</b> (351)202-03-61  |
| <b>Иваново</b> (4932)77-34-06      | <b>Набережные Челны</b> (8552)20-53-41 | <b>Севастополь</b> (8692)22-31-93     | <b>Череповец</b> (8202)49-02-64  |
| <b>Ижевск</b> (3412)26-03-58       | <b>Нижний Новгород</b> (831)429-08-12  | <b>Симферополь</b> (3652)67-13-56     | <b>Ярославль</b> (4852)69-52-93  |
| <b>Казань</b> (843)206-01-48       | <b>Новокузнецк</b> (3843)20-46-81      | <b>Смоленск</b> (4812)29-41-54        |                                  |

**Единый адрес для всех регионов: [skb@nt-rt.ru](mailto:skb@nt-rt.ru) || [www.s-lok.nt-rt.ru](http://www.s-lok.nt-rt.ru)**