

# Фланцевые клапанные блоки DBB

Технические характеристики



<b>Архангельск</b> (8182)63-90-72	<b>Калининград</b> (4012)72-03-81	<b>Новосибирск</b> (383)227-86-73	<b>Сочи</b> (862)225-72-31
<b>Астана</b> +7(7172)727-132	<b>Калуга</b> (4842)92-23-67	<b>Омск</b> (3812)21-46-40	<b>Ставрополь</b> (8652)20-65-13
<b>Астрахань</b> (8512)99-46-04	<b>Кемерово</b> (3842)65-04-62	<b>Орел</b> (4862)44-53-42	<b>Сургут</b> (3462)77-98-35
<b>Барнаул</b> (3852)73-04-60	<b>Киров</b> (8332)68-02-04	<b>Оренбург</b> (3532)37-68-04	<b>Тверь</b> (4822)63-31-35
<b>Белгород</b> (4722)40-23-64	<b>Краснодар</b> (861)203-40-90	<b>Пенза</b> (8412)22-31-16	<b>Томск</b> (3822)98-41-53
<b>Брянск</b> (4832)59-03-52	<b>Красноярск</b> (391)204-63-61	<b>Пермь</b> (342)205-81-47	<b>Тула</b> (4872)74-02-29
<b>Владивосток</b> (423)249-28-31	<b>Курск</b> (4712)77-13-04	<b>Ростов-на-Дону</b> (863)308-18-15	<b>Тюмень</b> (3452)66-21-18
<b>Волгоград</b> (844)278-03-48	<b>Липецк</b> (4742)52-20-81	<b>Рязань</b> (4912)46-61-64	<b>Ульяновск</b> (8422)24-23-59
<b>Вологда</b> (8172)26-41-59	<b>Магнитогорск</b> (3519)55-03-13	<b>Самара</b> (846)206-03-16	<b>Уфа</b> (347)22948 -12
<b>Воронеж</b> (473)204-51-73	<b>Москва</b> (495)268-04-70	<b>Санкт-Петербург</b> (812)309-46-40	<b>Хабаровск</b> (4212)92-98-04
<b>Екатеринбург</b> (343)384-55-89	<b>Мурманск</b> (8152)59-64-93	<b>Саратов</b> (845)249-38-78	<b>Челябинск</b> (351)202-03-61
<b>Иваново</b> (4932)77-34-06	<b>Набережные Челны</b> (8552)20-53-41	<b>Севастополь</b> (8692)22-31-93	<b>Череповец</b> (8202)49-02-64
<b>Ижевск</b> (3412)26-03-58	<b>Нижний Новгород</b> (831)429-08-12	<b>Симферополь</b> (3652)67-13-56	<b>Ярославль</b> (4852)69-52-93
<b>Казань</b> (843)206-01-48	<b>Новокузнецк</b> (3843)20-46-81	<b>Смоленск</b> (4812)29-41-54	

Единый адрес для всех регионов: [skb@nt-rt.ru](mailto:skb@nt-rt.ru) || [www.s-lok.nt-rt.ru](http://www.s-lok.nt-rt.ru)

## Modular Valves - Single Block & Bleed / Double Block & Bleed Valves

**Modular Valves** are integrally forged, one-piece double block and bleed assemblies for primary isolation of pressure take-offs, primary isolation of pressure take-offs, where the valve is directly mounted to the vessel or process pipe. Instruments may be directly mounted to the valve outlet or alternatively with gauge lines / impulse pipe work.

### Applications

- Block and bleed
- Double Block and Bleed
- Pressure Measurement
- Chemical Injection
- Level Measurement
- Sampling
- Flow Measurement

### Standard Features

- ANSI B 16.5 flanged Inlet connections 1/2" to 2" sizes.
- Class150 rated to Class2500 rated.
- API flanged Inlet connections sizes to 2 1/16".
- 1/2" NPT threaded female outlet to ANSI/ASME B1.20.1.
- 1/2" NPT threaded female vent connection to ANSI/ASME B1.20.1.
- Material thickness to ANSI B16.34.
- Bolted Body construction (Inlet or Outlet) is options.
- Firesafe to API 607, BS6755 Part2.



### Standard Pressure Testing

- To BS6755 Part1.

### Standard Material Traceability

- To EN 10204 3.1B (Body only).

### Ball Isolation Valve Seat Materials

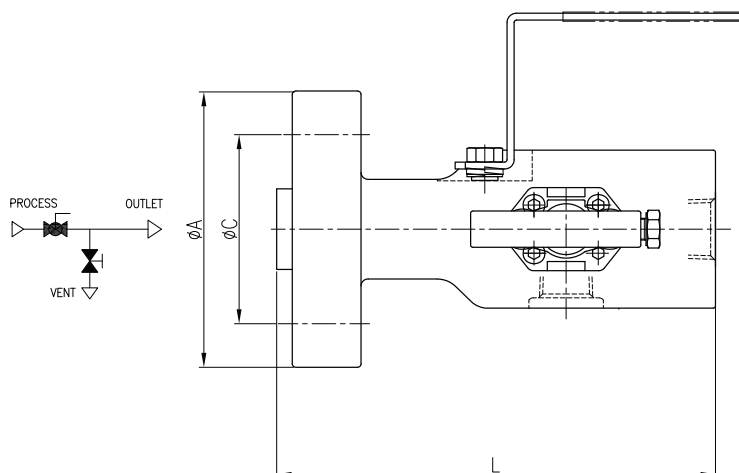
- A choice of PCDF, PTFE(virgin or filled), PCTFE and PEEK are available

### OS&Y Needle Type and Needle Type Globe Valve Packing Materials

- Standard valves are offered with Graphite. PTFE is also available as an option.

## Modular Valves - Single Block & Bleed Valves

### SSB1

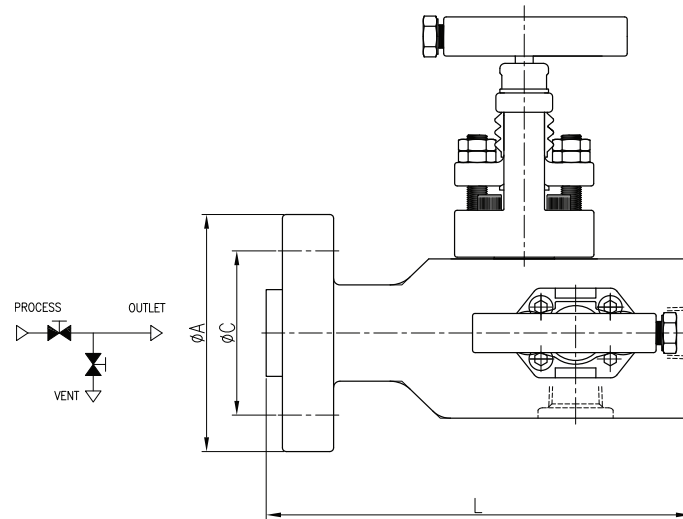


## Dimensions & Weights

Size (inch)	Rating lb	Dimensions(mm)				Weight (kg)
		L(RF)	L(RTJ)	A	C	
1/2	150	188	-	89	60.5	3.6
1/2	300	188	193	96	66.5	3.9
1/2	600	188	196	96	66.5	4.0
1/2	900/1,500	206	213	121	82.6	5.4
1/2	2,500	206	213	134	88.9	6.9
3/4	150	188	-	99	69.9	3.9
3/4	300	188	196	118	82.6	4.6
3/4	600	188	196	118	82.6	4.7
3/4	900/1,500	206	213	130	88.9	6.3
3/4	2,500	206	213	140	95.3	7.5
1	150	178	183	108	79.2	4.0
1	300	180	185	124	88.9	4.6
1	600	180	188	124	88.9	4.7
1	900/1,500	191	198	150	101.8	7.0
1	2,500	206	206	159	108.0	8.6
1 1/2	150	180	185	127	98.6	4.6
1 1/2	300	183	188	156	114.3	6.0
1 1/2	600	193	193	156	114.3	6.5
1 1/2	900/1,500	203	203	178	124.0	9.4
1 1/2	2,500	216	216	203	146.0	15.9
2	150	183	188	153	120.7	6.6
2	300	185	192	165	127.0	8.0
2	600	196	197	165	127.0	8.3
2	900/1,500	226	210	216	165.1	15.0
2	2,500	221	223	235	165.1	22.0

## Modular Valves - Single Block & Bleed Valves

### SSB2

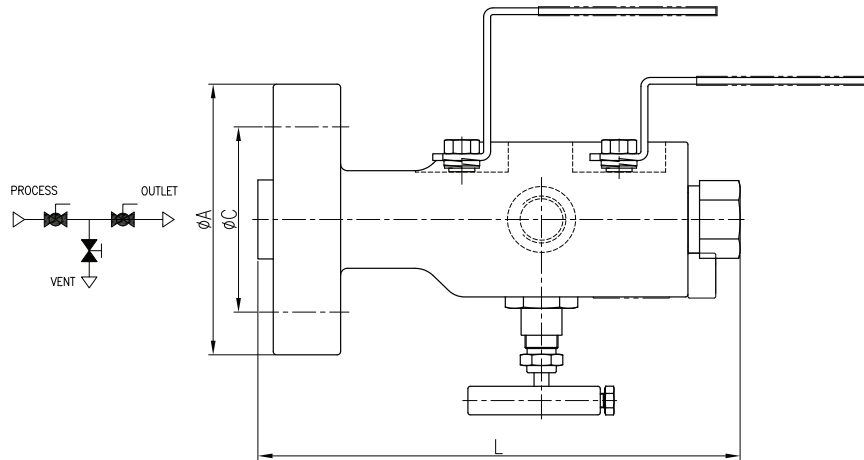


### Dimensions & Weights

Size (inch)	Rating lb	Dimensions(mm)				Weight (kg)
		L(RF)	L(RTJ)	A	C	
1/2	150	161	-	89	60.5	3.6
1/2	300	161	163	96	66.5	3.9
1/2	600	166	165	96	66.5	4.0
1/2	900/1,500	184	184	121	82.6	5.4
1/2	2,500	184	184	134	88.9	6.9
3/4	150	161	-	99	69.9	3.9
3/4	300	161	165	118	82.6	4.6
3/4	600	166	165	118	82.6	4.7
3/4	900/1,500	184	184	130	88.9	6.3
3/4	2,500	184	184	140	95.3	7.5
1	150	156	161	108	79.2	4.0
1	300	159	164	124	88.9	4.6
1	600	159	166	124	88.9	4.7
1	900/1,500	169	177	150	101.6	7.0
1	2,500	183	183	159	108.0	8.6
1 1/2	150	159	164	127	98.6	4.6
1 1/2	300	162	167	156	114.3	6.0
1 1/2	600	170	170	156	114.3	6.5
1 1/2	900/1,500	180	180	178	124.0	9.4
1 1/2	2,500	193	194	203	146.1	15.9
2	150	161	166	153	120.7	6.6
2	300	164	170	165	127.0	8.0
2	600	173	175	165	127.0	8.3
2	900/1,500	186	188	216	165.1	15.0
2	2,500	199	201	235	165.1	22.0

## Modular Valves - Double Block & Bleed Valves

### SDB1

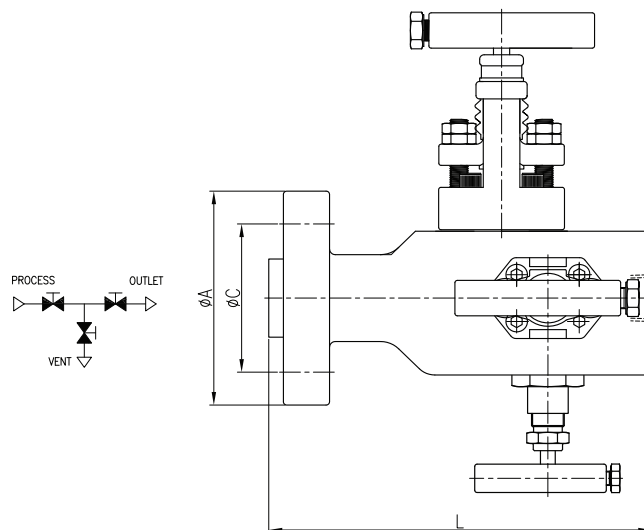


### Dimensions & Weights

Size (inch)	Rating lb	Dimensions(mm)				Weight (kg)
		L(RF)	L(RTJ)	A	C	
1/2	150	208	-	89	60.5	3.6
1/2	300	208	221	96	66.5	3.9
1/2	600	208	221	96	66.5	4.0
1/2	900/1,500	243	256	121	82.6	5.4
1/2	2,500	243	256	134	88.9	6.9
3/4	150	208	-	99	69.9	3.9
3/4	300	208	221	118	82.6	4.6
3/4	600	208	221	118	82.6	4.7
3/4	900/1,500	243	256	130	88.9	6.3
3/4	2,500	243	256	140	95.3	7.5
1	150	180	189	108	79.2	4.0
1	300	186	196	124	88.9	4.6
1	600	199	199	124	88.9	4.7
1	900/1,500	221	221	150	101.6	7.0
1	2,500	234	234	159	108.0	8.6
1 1/2	150	186	196	127	98.6	4.6
1 1/2	300	192	202	156	114.3	6.0
1 1/2	600	208	208	156	114.3	6.6
1 1/2	900/1,500	227	227	178	124.0	9.5
1 1/2	2,500	253	256	203	146.1	16.0
2	150	189	199	153	120.7	6.7
2	300	196	208	165	127.0	8.1
2	600	215	218	165	127.0	8.4
2	900/1,500	240	243	216	165.1	15.0
2	2,500	265	268	235	165.1	22.0

## Modular Valves - Double Block & Bleed Valves

### SDB2

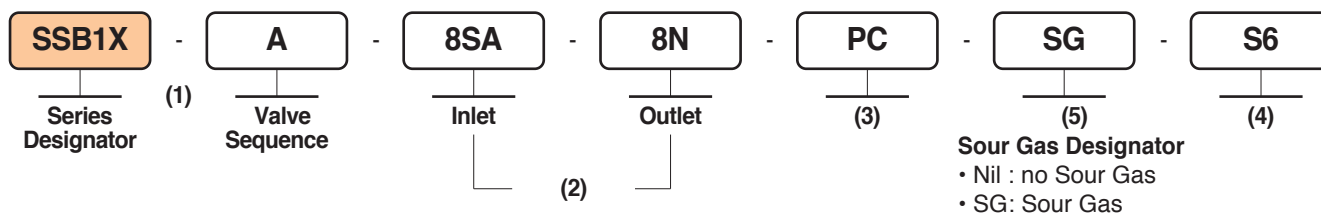


### Dimensions & Weights

Size (inch)	Rating lb	Dimensions(mm)				Weight (kg)
		L(RF)	L(RTJ)	A	C	
1/2	150	197	-	89	60.5	3.6
1/2	300	197	206	96	66.5	3.9
1/2	600	206	206	96	66.5	4.0
1/2	900/1,500	243	243	121	82.6	5.4
1/2	2,500	243	243	134	88.9	6.9
3/4	150	197	-	99	69.9	3.9
3/4	300	197	221	118	82.6	4.6
3/4	600	206	206	118	82.6	4.7
3/4	900/1,500	243	243	130	88.9	6.3
3/4	2,500	243	243	140	95.3	7.5
1	150	180	189	108	79.2	4.0
1	300	186	196	124	88.9	4.6
1	600	199	199	124	88.9	4.7
1	900/1,500	221	221	150	101.6	7.0
1	2,500	234	234	159	108.0	8.6
1 1/2	150	186	196	127	98.6	4.6
1 1/2	300	192	202	156	114.3	6.0
1 1/2	600	208	208	156	114.3	6.6
1 1/2	900/1,500	227	227	178	124.0	9.5
1 1/2	2,500	253	256	203	146.1	16.0
2	150	189	199	153	120.7	6.7
2	300	196	208	165	127.0	8.1
2	600	215	218	165	127.0	8.4
2	900/1,500	240	243	216	165.1	15.0
2	2,500	265	268	235	165.1	22.0

## Modular Valves - Single Block & Bleed / Double Block & Bleed Valves

### Ordering Information



### (1) Valve Series

Series		Valve Sequence	Primary Isolate	Secondary Isolate	Bleed	Bore Size	
						Ball	Needle
Identify							
INTERGRAL SINGLE BLOCK & BLEED VALVES (SSB)	1X:(FLANGE x 1/2"NPT) 1Z:(FLANGE x FLANGE)	A	BALL	-	NEEDLE	9.5	5.0
		B	BALL	-	OS & Y	14.0	5.0
		C	BALL	-	BALL	9.5	5.0
	2X:(FLANGE x 1/2"NPT) 2Z:(FLANGE x FLANGE)	A	OS & Y	-	OS & Y	9.5	5.0
		B	OS & Y	-	NEEDLE	9.5	5.0
		C	NEEDLE	-	NEEDLE	9.5	5.0
INTERGRAL DOUBLE BLOCK & BLEED VALVES (SDB)	1X:(FLANGE x 1/2"NPT) 1Z:(FLANGE x FLANGE)	A	BALL	BALL	NEEDLE	9.5	5.0
		B	BALL	BALL	OS & Y	14.0	5.0
		C	BALL	BALL	BALL	9.5	5.0
		D	BALL	NEEDLE	NEEDLE	9.5	5.0
		E	BALL	BALL	-	9.5	5.0
		F	BALL	NEEDLE	-	9.5	5.0
	2X:(FLANGE x 1/2"NPT) 2Z:(FLANGE x FLANGE)	A	OS & Y	OS & Y	OS & Y	9.5	5.0
		B	OS & Y	OS & Y	NEEDLE	9.5	5.0
		C	OS & Y	NEEDLE	NEEDLE	9.5	5.0
		D	NEEDLE	NEEDLE	NEEDLE	9.5	5.0

## Modular Valves - Single Block & Bleed / Double Block & Bleed Valves

### (2) Inlet & Outlet

Inch	Identify	Flange				Threads		Weld End	
		Description	Identify	Class	Identify	Type	Identify	Type	Identify
1/4	4	Spiral Finish -Raised Faced	S	150LB (ANSI B16.5)	A	NPT	N	BUTT WELD	BW
3/8	6	Smooth Finish -Raised Faced	M	300LB (ANSI B16.5)	B	BSPT	R	SOCKET WELD	SW
1/2	8	Stock Finish -Raised Faced	G	600LB (ANSI B16.5)	C				
3/4	12	Ring Type Joint -RTJ	J	900LB (ANSI B16.5)	D				
1	16	Spiral Finish -Flat Faced	H	1,500LB (ANSI B16.5)	E				
1 1/2	24	Smooth Finish -Flat Faced	K	2,500LB (ANSI B16.5)	F				
2	32	Stock Finish -Flat Faced	R	-	-				

### (3) Ball Valve Seat Material or Needle Valve Packing

Ball Valve Seat		Needle Valve Packing	
Seat Material	Identify	Packing Material	Identify
PVDF	Nil	PTFE	TE
PTFE	TE	Graphite	GF
PEEK	PK		
PCTFE	PC		

### (4) Body Material

Trim Material	
Material	Identify
ASTM A182 F316	S6
ASTM A182 F51	F51
UNS NO 4400	A400
ASTM A105	CS
ASTM A350 LF2	LF2

### (5) Option

- Materials are selected in accordance with NACE standards.
- To order, add - SG as a suffix to the ordering number. Example : SSB1X-A-8SA-8N-PC-SG-S6



- |                                    |  |                                       |                                  |
|------------------------------------|--|---------------------------------------|----------------------------------|
| <b>Архангельск</b> (8182)63-90-72  | <b>Калининград</b> (4012)72-03-81      | <b>Новосибирск</b> (383)227-86-73     | <b>Сочи</b> (862)225-72-31       |
| <b>Астана</b> +7(7172)727-132      | <b>Калуга</b> (4842)92-23-67           | <b>Омск</b> (3812)21-46-40            | <b>Ставрополь</b> (8652)20-65-13 |
| <b>Астрахань</b> (8512)99-46-04    | <b>Кемерово</b> (3842)65-04-62         | <b>Орел</b> (4862)44-53-42            | <b>Сургут</b> (3462)77-98-35     |
| <b>Барнаул</b> (3852)73-04-60      | <b>Киров</b> (8332)68-02-04            | <b>Оренбург</b> (3532)37-68-04        | <b>Тверь</b> (4822)63-31-35      |
| <b>Белгород</b> (4722)40-23-64     | <b>Краснодар</b> (861)203-40-90        | <b>Пенза</b> (8412)22-31-16           | <b>Томск</b> (3822)98-41-53      |
| <b>Брянск</b> (4832)59-03-52       | <b>Красноярск</b> (391)204-63-61       | <b>Пермь</b> (342)205-81-47           | <b>Тула</b> (4872)74-02-29       |
| <b>Владивосток</b> (423)249-28-31  | <b>Курск</b> (4712)77-13-04            | <b>Ростов-на-Дону</b> (863)308-18-15  | <b>Тюмень</b> (3452)66-21-18     |
| <b>Волгоград</b> (844)278-03-48    | <b>Липецк</b> (4742)52-20-81           | <b>Рязань</b> (4912)46-61-64          | <b>Ульяновск</b> (8422)24-23-59  |
| <b>Вологда</b> (8172)26-41-59      | <b>Магнитогорск</b> (3519)55-03-13     | <b>Самара</b> (846)206-03-16          | <b>Уфа</b> (347)22948 -12        |
| <b>Воронеж</b> (473)204-51-73      | <b>Москва</b> (495)268-04-70           | <b>Санкт-Петербург</b> (812)309-46-40 | <b>Хабаровск</b> (4212)92-98-04  |
| <b>Екатеринбург</b> (343)384-55-89 | <b>Мурманск</b> (8152)59-64-93         | <b>Саратов</b> (845)249-38-78         | <b>Челябинск</b> (351)202-03-61  |
| <b>Иваново</b> (4932)77-34-06      | <b>Набережные Челны</b> (8552)20-53-41 | <b>Севастополь</b> (8692)22-31-93     | <b>Череповец</b> (8202)49-02-64  |
| <b>Ижевск</b> (3412)26-03-58       | <b>Нижний Новгород</b> (831)429-08-12  | <b>Симферополь</b> (3652)67-13-56     | <b>Ярославль</b> (4852)69-52-93  |
| <b>Казань</b> (843)206-01-48       | <b>Новокузнецк</b> (3843)20-46-81      | <b>Смоленск</b> (4812)29-41-54        |                                  |

**Единый адрес для всех регионов: [skb@nt-rt.ru](mailto:skb@nt-rt.ru) || [www.s-lok.nt-rt.ru](http://www.s-lok.nt-rt.ru)**